



Sergé Xinix

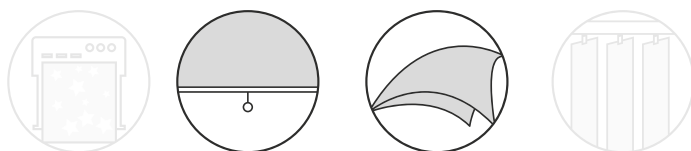
OF 0%

WKXXO

FABRIC CODE

Bedroom or boardroom, home theatre or classroom: if it needs darkening, Xinix does the job. The looks of a Sergé screen, the darkening performance of a pro.

Can be used both exterior and interior



Only suitable for zip-systems

Sergé Xinix

OF 0%

WKXXO

FABRIC CODE

Yarn

Technical specifications	Average Values	Standard
Titer	165 tex	ISO 1889 (2009)
Weighted composition	Glass 41.5%, PVC 58.5%	ISO 3801 (1977)
Diameter	0.38 mm	

Fabric

Type of fabric	PVC-coated fiberglass fabric with a darkening coating
Weave pattern	twill weave
Widths	2100 mm
Roll length (nominally)	40 m

Technical specifications	Average Values	Standard
Thickness	0.6 mm	ISO 5084 (1996)
Mass	613 g/m ²	ISO 3801-5 (1977)
Fire resistance	M1	NF P92-503 (1995)
	FR	NFPA 701 (2015)
Breaking strength	B1	DIN 4102 (1998)
	warp 310 daN, weft 200 daN	ISO 13934-1 (2013)
Elongation at break	warp 6,4%, weft 4.0%	ISO 13934-1 (2013)
Tear resistance	warp 9,7 daN, weft 11,0 daN	EN ISO 4674 part 1 method A (2016)
Colorfastness (white excluded)	blue scale grade ≥ 7	ISO 105-B02 (2014)
Adhesion strength	length direction 3.82 N/20 mm	ISO2411 (2017)
	width direction 4.40 N/20 mm	

Processing

General - specifications are purely indicative and may not be considered as binding. Colors may vary from the samples shown.

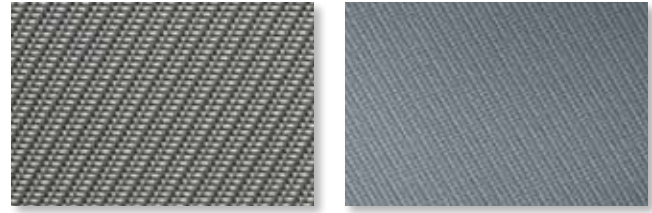
Cutting	crush or ultrasonic
Welding	thermal, HF, ultrasonic, sewing
System	only suitable for zip-systems
Cleaning	remove dust from the fabric surface, then wipe gently with a humid soft sponge while using a mild detergent

Copyright Helioscreen 2023. Registered trademark. A Helioscreen product.

Our Xinix fabric darkens every room like a pro

- Efficient room darkening
- Suitable for interior and exterior
- Class 4 against heat and glare
- Relatively low in weight
- Relatively thin

108101 grey-white A / B
Width: 2100 mm



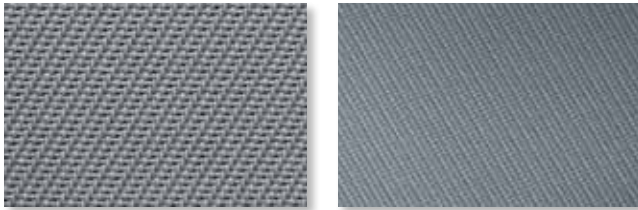
Solar Heat & Light Control Properties

	Ts	Rs	As	Tv	TVdiff	TVdir	Tuv	TVdif-h	Glare control
A	0.2	31.4	68.4	0.0	0.0	0.0	0.0	0.0	Class 4
B	0.2	31.1	68.7	0.0	0.0	0.0	0.0	0.0	Class 4

g_{tot}

	A		B		C		D	
	ext.	int.	ext.	int.	ext.	int.	ext.	int.
A Values	0.15	0.53	0.11	0.53	0.06	0.47	0.06	0.28
A Classes	2	0	3	0	4	1	4	2
B Values	0.15	0.53	0.11	0.53	0.06	0.47	0.06	0.28
B Classes	2	0	3	0	4	1	4	2

108108 grey A / B
Width: 2100 mm



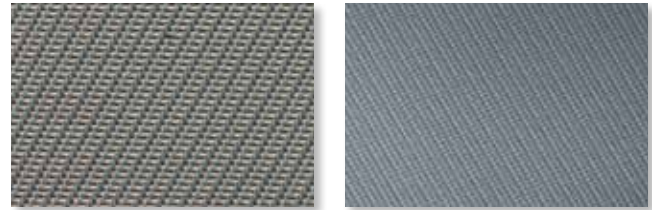
Solar Heat & Light Control Properties

	Ts	Rs	As	Tv	TVdiff	TVdir	Tuv	TVdif-h	Glare control
A	0.2	20.0	79.8	0.0	0.0	0.0	0.0	0.0	Class 4
B	0.2	32.2	67.6	0.0	0.0	0.0	0.0	0.0	Class 4

g_{tot}

	A		B		C		D	
	ext.	int.	ext.	int.	ext.	int.	ext.	int.
A Values	0.17	0.60	0.13	0.59	0.07	0.50	0.07	0.29
A Classes	2	0	3	0	4	0	4	2
B Values	0.14	0.52	0.11	0.53	0.06	0.46	0.06	0.28
B Classes	3	0	3	0	4	1	4	2

108112 grey-sand A / B
Width: 2100 mm



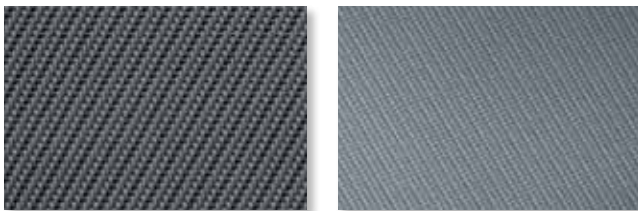
Solar Heat & Light Control Properties

	Ts	Rs	As	Tv	TVdiff	TVdir	Tuv	TVdif-h	Glare control
A	0.2	25.0	74.8	0.0	0.0	0.0	0.0	0.0	Class 4
B	0.2	31.0	68.8	0.0	0.0	0.0	0.0	0.0	Class 4

g_{tot}

	A		B		C		D	
	ext.	int.	ext.	int.	ext.	int.	ext.	int.
A Values	0.16	0.57	0.12	0.57	0.07	0.49	0.06	0.29
A Classes	2	0	3	0	4	1	4	2
B Values	0.15	0.53	0.11	0.53	0.06	0.47	0.06	0.28
B Classes	2	0	3	0	4	1	4	2

108118 grey-black A / B
Width: 2100 mm



Solar Heat & Light Control Properties

	Ts	Rs	As	Tv	TVdiff	TVdir	Tuv	TVdif-h	Glare control
A	0.2	15.2	84.6	0.0	0.0	0.0	0.0	0.0	Class 4
B	0.2	31.1	68.7	0.0	0.0	0.0	0.0	0.0	Class 4

g_{tot}

	A		B		C		D	
	ext.	int.	ext.	int.	ext.	int.	ext.	int.
A Values	0.18	0.62	0.13	0.62	0.08	0.52	0.07	0.29
A Classes	2	0	3	0	4	0	4	2
B Values	0.15	0.53	0.11	0.53	0.06	0.47	0.06	0.28
B Classes	2	0	3	0	4	0	4	2

118118 black A / B
Width: 2100 mm



Solar Heat & Light Control Properties

	Ts	Rs	As	Tv	TVdiff	TVdir	Tuv	TVdif-h	Glare control
A	0.0	6.2	93.8	0.0	0.0	0.0	0.0	0.0	Class 4
B	0.1	29.5	70.4	0.0	0.0	0.0	0.0	0.0	Class 4

g_{tot}

	A		B		C		D	
	ext.	int.	ext.	int.	ext.	int.	ext.	int.
A Values	0.20	0.68	0.15	0.66	0.08	0.55	0.08	0.30
A Classes	2	0	2	0	4	0	4	2
B Values	0.15	0.54	0.11	0.54	0.06	0.47	0.06	0.28
B Classes	2	0	3	0	4	1	4	2