

# Panama Pro

OF 1% / 3% / 5% / 10%

BJ01A

FABRIC CODE

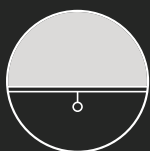
BJ03A

BJ05A

BJ10A

Economic, lightweight and an explicit textile look. Ideal for meeting different demands of openness factors with the same weaving pattern.

For interior.



# Panama Pro

## OF 1% / 3%

**BJ01A**
**BJ03A**
**FABRIC CODE**

## Yarn

| Technical specifications | Average Values     | Standard             |
|--------------------------|--------------------|----------------------|
| Titer                    | 95 tex             | ISO 1889 (2009)      |
| Weighted composition     | Glass 36%, PVC 64% | ISO 3801 (1977)      |
| Diameter                 | 0.28 mm            |                      |
| Environment              |                    | Oekotex standard 100 |



## Fabric

|                         |                                   |                                   |
|-------------------------|-----------------------------------|-----------------------------------|
| Type of fabric          | PVC-coated fiberglass fabric      |                                   |
| Weave pattern           | basket weave                      |                                   |
|                         | <b>OF 1%</b>                      | <b>OF 3%</b>                      |
| Widths                  | fabric on rolls:<br>2500, 3100 mm | fabric on rolls:<br>2500, 3100 mm |
| Roll length (nominally) | 30 m                              | 30 m                              |

| Technical specifications         | Average Values            |                           | Standard                        |
|----------------------------------|---------------------------|---------------------------|---------------------------------|
|                                  | OF 1%                     | OF 3%                     |                                 |
| Thickness                        | 0.5 mm                    | 0.5 mm                    | ISO/DIS 5084.2 (1996)           |
| Mass                             | 424 g/m <sup>2</sup>      | 390 g/m <sup>2</sup>      | ISO 3801 (1977)                 |
| Fire resistance                  | M2                        | M2                        | UNE23.727-90                    |
|                                  | FR                        | FR                        | NFPA 701 (2010)                 |
| Volatile organic compounds (voc) | Class 2                   | Class 2                   | EN 13773                        |
|                                  | complies                  | complies                  | GREENGUARD                      |
| Breaking strength warp/weft      | complies                  | complies                  | GREENGUARD Childeren & School   |
| Breaking strength warp/weft      | 240 daN / 190 daN         | 250 daN / 150 daN         | ISO 13934-1 (1999)              |
| Elongation at break warp/weft    | 6,8% / 4,2%               | 6,6% / 3,2%               | ISO 13934-1 (1999)              |
| Tear resistancewarp/weft         | 7,3 daN / 7,5 daN         | 6,9 daN / 9,3 daN         | ISO 4674 part 1 method A (2003) |
| Colorfastness (white excluded)   | 7-8 scale of blue         | 7 scale of blue           | ISO 105 B02 (1994)              |
| Air porosity                     | 185 l/m <sup>2</sup> /sec | 496 l/m <sup>2</sup> /sec | ISO/DIS 9237 (1995)             |

## Processing

General - specifications are purely indicative and may not be considered as binding. Colors may vary from the samples shown.

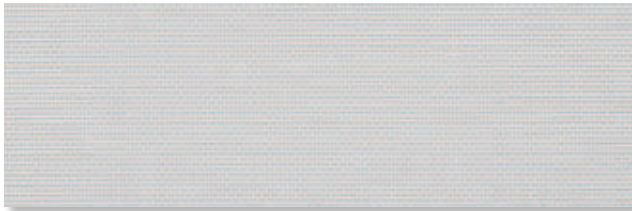
|                 |   |
|-----------------|---|
| <b>Cutting</b>  | crush or ultrasonic; railroad or width out of roll width  |
| <b>Welding</b>  | thermal, HF, ultrasonic, sewing   |
| <b>Cleaning</b> | remove dust from the fabric surface, then wipe gently with a humid soft sponge while using a mild detergent |

# Panama Pro

OF 3%

BJ03A

**101101** **white**  
Widths: 2500, 3100 mm



Solar Heat & Light Control Properties

|  | Ts   | Rs   | As   | Tv   | TVdiff | TVdir | Tuv | TVdif-h | Glare control |
|--|------|------|------|------|--------|-------|-----|---------|---------------|
|  | 16.5 | 71.7 | 11.8 | 15.7 | 12.2   | 3.5   | 3.9 | 13.4    | Class 1       |

gtot

|         | A    | B    | C    | D    |
|---------|------|------|------|------|
|         | int. | int. | int. | int. |
| Values  | 0.32 | 0.34 | 0.34 | 0.25 |
| Classes | 2    | 2    | 2    | 2    |

**101116** **white-linen**  
Widths: 2500, 3100 mm



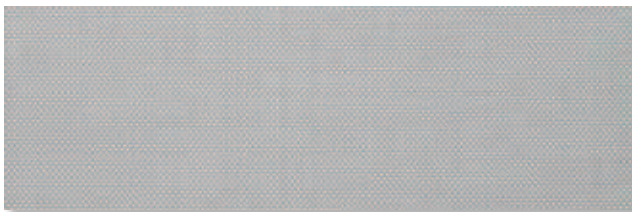
Solar Heat & Light Control Properties

|  | Ts   | Rs   | As   | Tv   | TVdiff | TVdir | Tuv | TVdif-h | Glare control |
|--|------|------|------|------|--------|-------|-----|---------|---------------|
|  | 15.8 | 64.6 | 19.6 | 13.6 | 10.4   | 3.2   | 3.6 | 11.6    | Class 1       |

gtot

|         | A    | B    | C    | D    |
|---------|------|------|------|------|
|         | int. | int. | int. | int. |
| Values  | 0.36 | 0.37 | 0.36 | 0.25 |
| Classes | 1    | 1    | 1    | 2    |

**101117** **white-pearl**  
Widths: 2500, 3100 mm



Solar Heat & Light Control Properties

|  | Ts   | Rs   | As   | Tv   | TVdiff | TVdir | Tuv | TVdif-h | Glare control |
|--|------|------|------|------|--------|-------|-----|---------|---------------|
|  | 12.1 | 57.2 | 30.7 | 10.6 | 7.3    | 3.3   | 3.7 | 8.9     | Class 1       |

gtot

|         | A    | B    | C    | D    |
|---------|------|------|------|------|
|         | int. | int. | int. | int. |
| Values  | 0.39 | 0.41 | 0.38 | 0.26 |
| Classes | 1    | 1    | 1    | 2    |

**116116** **linen**  
Widths: 2500, 3100 mm



Solar Heat & Light Control Properties

|  | Ts   | Rs   | As   | Tv   | TVdiff | TVdir | Tuv | TVdif-h | Glare control |
|--|------|------|------|------|--------|-------|-----|---------|---------------|
|  | 17.7 | 49.5 | 32.8 | 14.0 | 10.6   | 3.4   | 4.0 | 11.9    | Class 1       |

gtot

|         | A    | B    | C    | D    |
|---------|------|------|------|------|
|         | int. | int. | int. | int. |
| Values  | 0.45 | 0.45 | 0.41 | 0.27 |
| Classes | 1    | 1    | 1    | 2    |

**117117** **pearl**  
Widths: 2500, 3100 mm



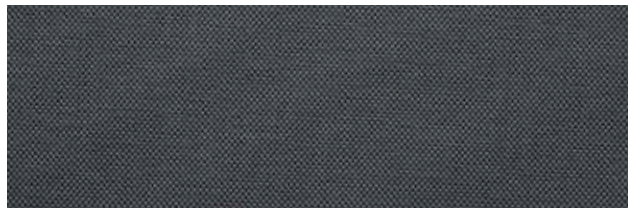
Solar Heat & Light Control Properties

|  | Ts  | Rs | As   | Tv  | TVdiff | TVdir | Tuv | TVdif-h | Glare control |
|--|-----|----|------|-----|--------|-------|-----|---------|---------------|
|  | 8.4 | 31 | 60.6 | 6.6 | 3.3    | 3.3   | 3.8 | 5.4     | Class 2       |

g<sub>tot</sub>

|         | A    | B    | C    | D    |
|---------|------|------|------|------|
|         | int. | int. | int. | int. |
| Values  | 0.54 | 0.54 | 0.47 | 0.28 |
| Classes | 0    | 0    | 1    | 2    |

**118108** **black-grey**  
Widths: 2500, 3100 mm



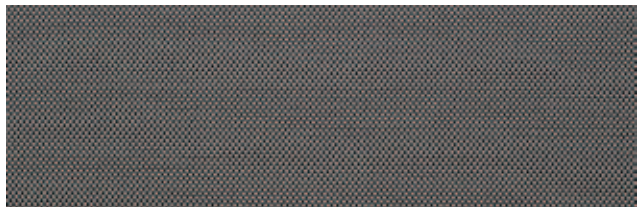
Solar Heat & Light Control Properties

|  | Ts  | Rs  | As   | Tv  | TVdiff | TVdir | Tuv | TVdif-h | Glare control |
|--|-----|-----|------|-----|--------|-------|-----|---------|---------------|
|  | 4.1 | 7.2 | 88.7 | 4.0 | 0.5    | 3.5   | 4.0 | 3.0     | Class 3       |

g<sub>tot</sub>

|         | A    | B    | C    | D    |
|---------|------|------|------|------|
|         | int. | int. | int. | int. |
| Values  | 0.68 | 0.66 | 0.54 | 0.30 |
| Classes | 0    | 0    | 0    | 2    |

**118117** **black-pearl**  
Widths: 2500, 3100 mm



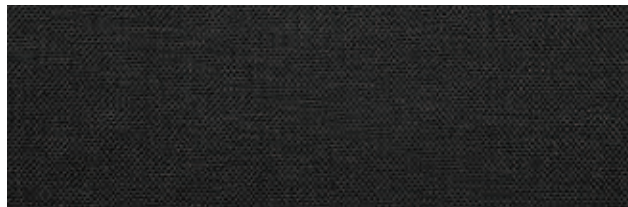
Solar Heat & Light Control Properties

|  | Ts  | Rs | As   | Tv  | TVdiff | TVdir | Tuv | TVdif-h | Glare control |
|--|-----|----|------|-----|--------|-------|-----|---------|---------------|
|  | 3.4 | 11 | 85.6 | 3.1 | 0.6    | 2.5   | 2.9 | 2.4     | Class 3       |

g<sub>tot</sub>

|         | A    | B    | C    | D    |
|---------|------|------|------|------|
|         | int. | int. | int. | int. |
| Values  | 0.65 | 0.64 | 0.53 | 0.30 |
| Classes | 0    | 0    | 0    | 2    |

**118118** **black**  
Widths: 2500, 3100 mm



Solar Heat & Light Control Properties

|  | Ts  | Rs  | As   | Tv  | TVdiff | TVdir | Tuv | TVdif-h | Glare control |
|--|-----|-----|------|-----|--------|-------|-----|---------|---------------|
|  | 4.5 | 4.3 | 91.2 | 4.4 | 0.5    | 3.9   | 4.4 | 3.3     | Class 3       |

g<sub>tot</sub>

|         | A    | B    | C    | D    |
|---------|------|------|------|------|
|         | int. | int. | int. | int. |
| Values  | 0.69 | 0.67 | 0.55 | 0.31 |
| Classes | 0    | 0    | 0    | 2    |

**118633** **black-cocoa**  
Widths: 2500, 3100 mm



Solar Heat & Light Control Properties

|  | Ts  | Rs  | As   | Tv  | TVdiff | TVdir | Tuv | TVdif-h | Glare control |
|--|-----|-----|------|-----|--------|-------|-----|---------|---------------|
|  | 2.0 | 5.3 | 92.7 | 1.9 | 0.3    | 1.6   | 1.8 | 1.4     | Class 3       |

g<sub>tot</sub>

|         | A    | B    | C    | D    |
|---------|------|------|------|------|
|         | int. | int. | int. | int. |
| Values  | 0.68 | 0.67 | 0.55 | 0.30 |
| Classes | 0    | 0    | 0    | 2    |