

# Panama Pro

OF 1% / 3% / 5% / 10%

BJ01A

FABRIC CODE

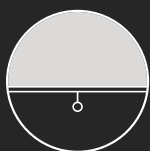
BJ03A

BJ05A

BJ10A

Economic, lightweight and an explicit textile look. Ideal for meeting different demands of openness factors with the same weaving pattern.

For interior.



# Panama Pro

## OF 5% / 10%

### BJ05A

### BJ10A

### FABRIC CODE

## Yarn

Technical specifications	Average Values	Standard
Titer	95 tex	ISO 1889 (2009)
Weighted composition	Glass 36%, PVC 64%	ISO 3801 (1977)
Diameter	0.28 mm	
Environment		Oekotex standard 100



## Fabric

Type of fabric	PVC-coated fiberglass fabric	
Weave pattern	basket weave	
	<b>OF 5%</b>	<b>OF 10% (on demand)</b>
Widths	fabric on rolls: 2500, 3100 mm Vertical vanes: 89, 127 mm	fabric on rolls: 2500, 3100 mm
Roll length (nominally)	30 m	30 m

Technical specifications	Average Values		Standard
	OF 5%	OF 10%	
Thickness	0.4 mm	0.5 mm	ISO/DIS 5084.2 (1996)
Mass	393 g/m <sup>2</sup>	351 g/m <sup>2</sup>	ISO 3801 (1977)
Fire resistance	M2	M2	UNE23.727-90
	FR	FR	NFPA 701 (2010)
Volatile organic compounds (voc)	Class 2	Class 2	EN 13773
	complies	complies	GREENGUARD
Breaking strength warp/weft	200 daN / 220 daN	200 daN / 170 daN	ISO 13934-1 (1999)
Elongation at break warp/weft	5,6% / 5,6%	5,4% / 3,8%	ISO 13934-1 (1999)
Tear resistance warp/weft	7,9 daN / 8,4 daN	6,8 daN / 9,9 daN	ISO 4674 part 1 method A (2003)
Colorfastness (white excluded)	7 scale of blue	7 scale of blue	ISO 105 B02 (1994)
Air porosity	721 l/m <sup>2</sup> /sec	1180 l/m <sup>2</sup> /sec	ISO/DIS 9237 (1995)

## Processing

General - specifications are purely indicative and may not be considered as binding. Colors may vary from the samples shown

Cutting	crush or ultrasonic; railroad or width out of roll width
Welding	thermal, HF, ultrasonic, sewing
Cleaning	remove dust from the fabric surface, then wipe gently with a humid soft sponge while using a mild detergent

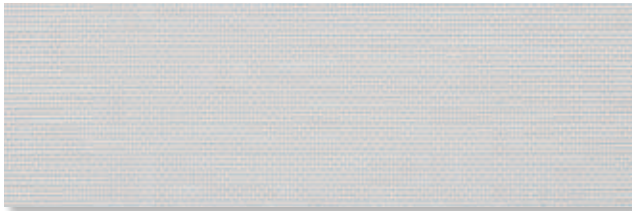
# Panama Pro

OF 10%

BJ10A

available on demand

**101101** **white**  
Widths: 2500, 3100 mm



Solar Heat & Light Control Properties

	Ts	Rs	As	Tv	TVdiff	TVdir	Tuv	TVdif-h	Glare control
	21.6	67.2	11.2	20.7	12.1	8.6	9.1	17.1	Class 0

gtot

	A	B	C	D
	int.	int.	int.	int.
Values	0.35	0.36	0.35	0.25
Classes	1	1	1	2

**101116** **white-linen**  
Widths: 2500, 3100 mm



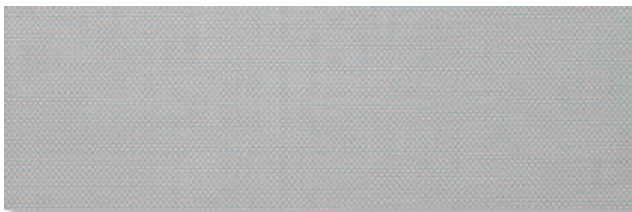
Solar Heat & Light Control Properties

	Ts	Rs	As	Tv	TVdiff	TVdir	Tuv	TVdif-h	Glare control
	12.9	58.7	28.4	19.6	10.7	8.9	9.5	16.1	Class 0

gtot

	A	B	C	D
	int.	int.	int.	int.
Values	0.39	0.40	0.38	0.26
Classes	1	1	1	2

**101117** **white-pearl**  
Widths: 2500, 3100 mm



Solar Heat & Light Control Properties

	Ts	Rs	As	Tv	TVdiff	TVdir	Tuv	TVdif-h	Glare control
	18.2	51.1	30.7	16.6	7.1	9.5	10.1	13.3	Class 0

gtot

	A	B	C	D
	int.	int.	int.	int.
Values	0.44	0.44	0.41	0.26
Classes	1	1	1	2

**116116** **linen**  
Widths: 2500, 3100 mm



Solar Heat & Light Control Properties

	Ts	Rs	As	Tv	TVdiff	TVdir	Tuv	TVdif-h	Glare control
	24.1	46.2	29.7	20.3	10.7	9.6	10.3	16.6	Class 0

gtot

	A	B	C	D
	int.	int.	int.	int.
Values	0.48	0.47	0.42	0.27
Classes	1	1	1	2

**117117** **pearl**  
Widths: 2500, 3100 mm



Solar Heat & Light Control Properties

	Ts	Rs	As	Tv	TVdiff	TVdir	Tuv	TVdif-h	Glare control
	14.0	31.3	54.7	12.0	3.6	8.4	9.0	9.4	Class 1

g<sub>tot</sub>

	A	B	C	D
	int.	int.	int.	int.
Values	0.55	0.54	0.47	0.28
Classes	0	0	1	2

**118108** **black-grey**  
Widths: 2500, 3100 mm



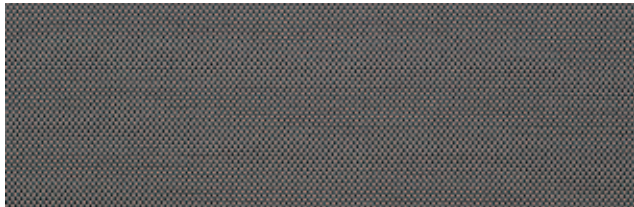
Solar Heat & Light Control Properties

	Ts	Rs	As	Tv	TVdiff	TVdir	Tuv	TVdif-h	Glare control
	10.8	9.4	79.8	10.3	0.9	9.4	9.9	7.7	Class 1

g<sub>tot</sub>

	A	B	C	D
	int.	int.	int.	int.
Values	0.67	0.65	0.54	0.30
Classes	0	0	0	2

**118117** **black-pearl**  
Widths: 2500, 3100 mm



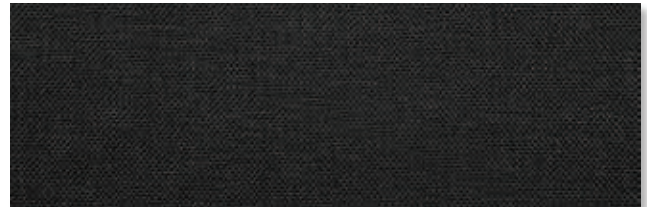
Solar Heat & Light Control Properties

	Ts	Rs	As	Tv	TVdiff	TVdir	Tuv	TVdif-h	Glare control
	10.6	13.1	76.3	10.3	1	9.3	9.8	7.8	Class 1

g<sub>tot</sub>

	A	B	C	D
	int.	int.	int.	int.
Values	0.65	0.63	0.53	0.30
Classes	0	0	0	2

**118118** **black**  
Widths: 2500, 3100 mm



Solar Heat & Light Control Properties

	Ts	Rs	As	Tv	TVdiff	TVdir	Tuv	TVdif-h	Glare control
	9.3	4.2	86.5	9.2	0.5	8.7	9.1	6.9	Class 1

g<sub>tot</sub>

	A	B	C	D
	int.	int.	int.	int.
Values	0.70	0.68	0.56	0.31
Classes	0	0	0	2

**118633** **black-cocoa**  
Widths: 2500, 3100 mm



Solar Heat & Light Control Properties

	Ts	Rs	As	Tv	TVdiff	TVdir	Tuv	TVdif-h	Glare control
	10.8	4.9	84.3	10.6	0.6	10.0	10.6	7.9	Class 1

g<sub>tot</sub>

	A	B	C	D
	int.	int.	int.	int.
Values	0.70	0.68	0.55	0.31
Classes	0	0	0	2